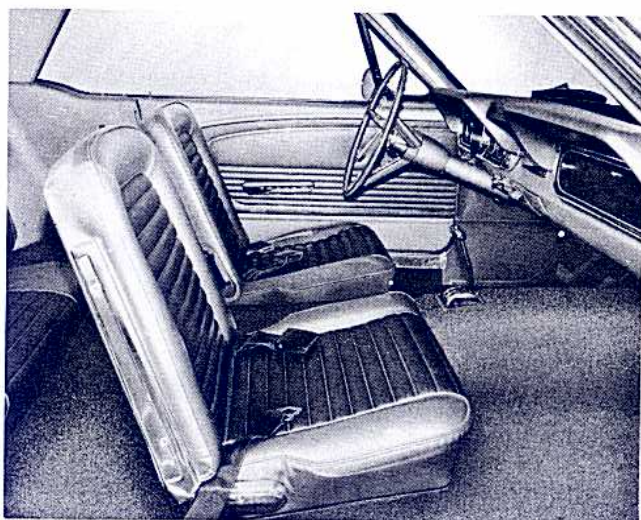


EXTERIOR STYLING AND FEATURES

- Continuation of Mustang's highly successful sporty-type styling theme.
- New extruded aluminum grille with bright horizontal bars increases the wide, low front end appearance. Mustang ornament in a bright-metal frame "floats" at grille center.
- Bright-metal hood lip molding gracefully completes outline of grille.



- New distinctive standard equipment wheel covers.
- New simulated air scoop at rear of body side sculptured area with three forward thrusting bars to enhance Mustang's look of fleetness and motion.
- Full-length bright-metal rocker panel molding.
- Attractive product identification with FORD on the hood leading edge, and MUSTANG lettering plus Mustang emblem on front fenders.
- Bright-metal trimmed, three-sectional taillights/turn signals are located above the bumper on either side. Standard equipment back-up lights are located below the bumper.
- Unique fuel filler cap with a brushed finish center area and a raised Mustang emblem.
- Windshield, rear window and curved side glass tastefully accented with bright-metal trim.
- Large, round design outside rearview mirror.

INTERIOR STYLING AND FEATURES

- Five dial instrument cluster with fuel, oil pressure, amps, and engine temperature gages.
- Choice of five all-vinyl trims — black, red, blue, aqua and parchment. All major interior items, including the headlining, are color-keyed to the trim selection. With the parchment trim, the instrument panel safety pad, radio-defroster grille and carpets are color-coordinated to the exterior color.
- Safety-padded instrument panel and sun visors are standard equipment.
- Sculptured, foam-padded front bucket seats with outstanding seating comfort — both seats fully adjustable.
- Additional standard features — front and rear seat belts . . . large panel-mounted ash tray . . . door-operated courtesy lights . . . glove box light . . . cigarette lighter . . . all-vinyl door trim panels . . . suspended accelerator pedal . . . 16-inch, three-spoke, safety-type steering wheel . . . front seat arm rests . . . molded nylon-rayon carpeting.

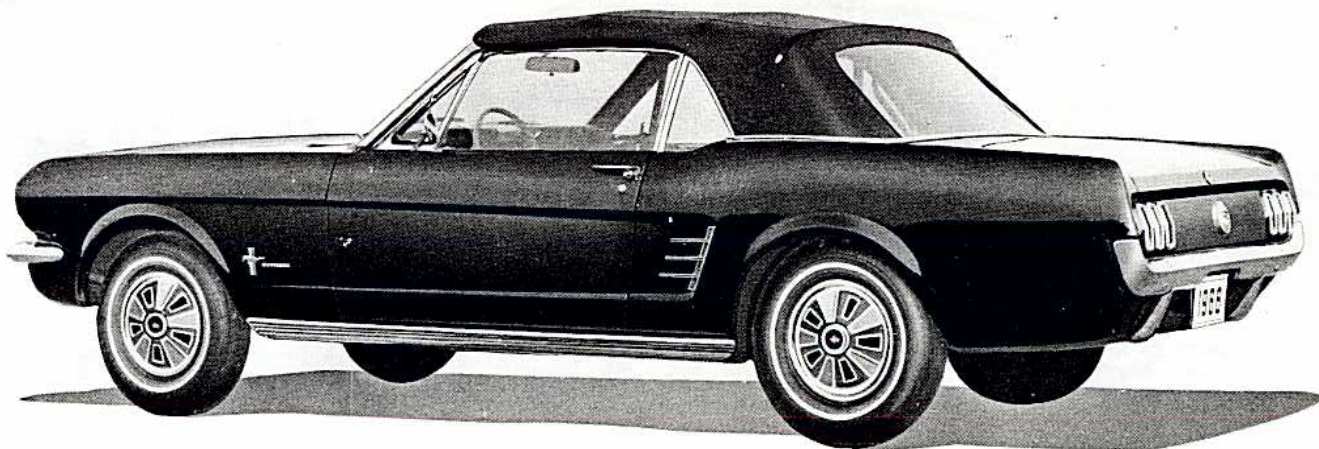
MAJOR SPECIFICATIONS

Wheelbase	108"
Tread — Front	6-Cyl. - 55.4" — V-8 - 56.0"
— Rear	56.0"
Length — Overall	181.6"
Width — Overall	68.2"
Height — Overall	51.1"
Usable Luggage Capacity	9.0 cu ft

Front Compartment Dimensions —	
Effective Head Room	37.4"
Maximum Effective Leg Room	41.8"
Hip Room	54.7"
Shoulder Room	53.8"
Curb Weight (6-Cyl. — Std. Transmission)	2610 lbs



MUSTANG CONVERTIBLE



EXTERIOR STYLING AND FEATURES

- Top up or down, Mustang's sleek styling provides America's sportiest convertible.
- New extruded aluminum grille with bright horizontal bars increases the wide, low front end appearance. Mustang ornament in a bright-metal frame "floats" at grille center.
- Bright-metal hood lip molding gracefully completes outline of grille.
- Five ply laminated top available in black or white. Top boot is all-vinyl, color-keyed to interior.
- New simulated spoke wheel covers.
- New simulated air scoop at rear of body side sculptured area enhances the Mustang's look of fleetness and motion.
- Full-length bright-metal rocker panel molding.
- Bright-metal trimmed, three-sectional taillights/turn signals are located above the bumper on either side. Standard equipment back-up lights are located below the bumper.
- Bright-metal trim tastefully accents the windshield, rear window and curved side windows.
- Large round design outside rearview mirror.
- FORD on hood leading edge – Mustang emblem and lettering on front fenders.
- New fuel filler cap with a raised Mustang emblem on a brushed finish center area.



- Additional standard features – large panel-mounted front ash tray . . . door-operated courtesy lights . . . glove box light . . . cigarette lighter . . . all-vinyl door trim panels . . . suspended accelerator pedal . . . 16-inch, three-spoke, safety-type steering wheel . . . molded, nylon-rayon carpeting . . . safety-padded instrument panel and sun visors . . . front and rear arm rests with ash trays integral in the rear.

INTERIOR STYLING AND FEATURES

- Five dial instrument cluster with fuel, oil pressure, amps, and engine temperature gages.
- Choice of five all-vinyl trims – black, red, blue, aqua and parchment. All major interior items are color-keyed to the trim selection. With the parchment trim, the instrument panel safety pad, radio-defroster grille and carpets are color-coordinated to the exterior color.
- Sculptured foam-padded front bucket seats with outstanding seating comfort – both seats fully adjustable.
- Front and rear seat belts – standard equipment.

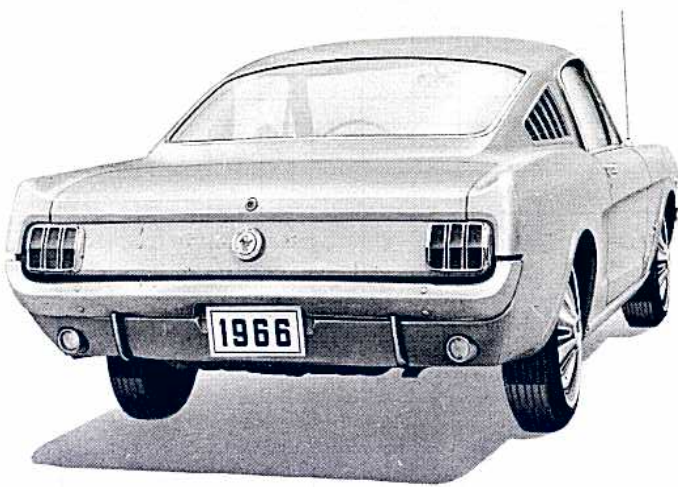
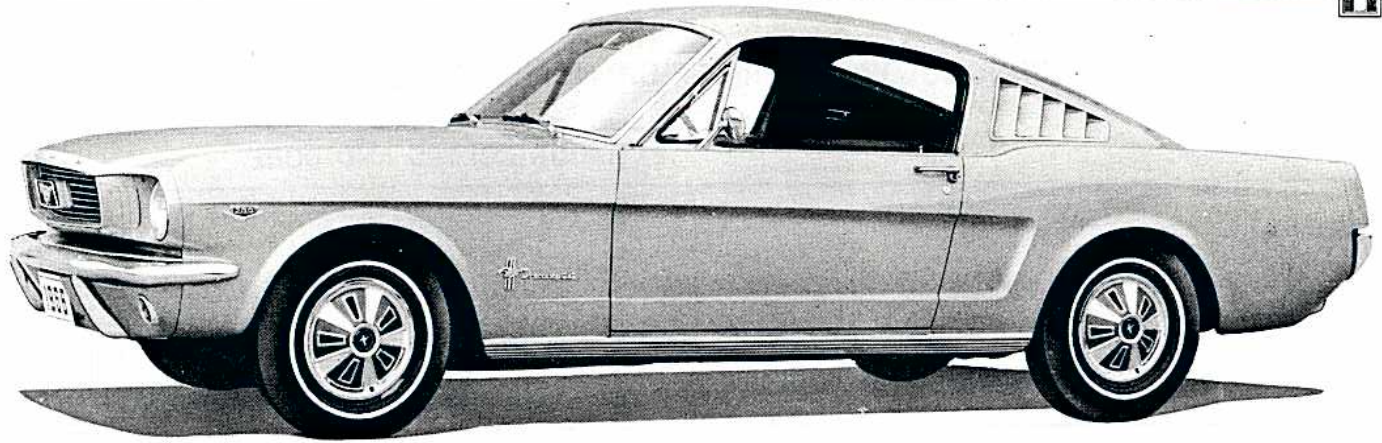


MAJOR SPECIFICATIONS

Wheelbase	108"
Tread – Front	6-Cyl. - 55.4" – V-8 - 56.0"
– Rear	56.0"
Length – Overall	181.6"
Width – Overall	68.2"
Height – Overall	51.0"
Usable Luggage Capacity	7.7 cu ft

Front Compartment Dimensions –	
Effective Head Room	37.8"
Maximum Effective Leg Room	41.8"
Hip Room	54.7"
Shoulder Room	53.8"
Curb Weight (6-Cy. – Std. Transmission)	2770 lbs

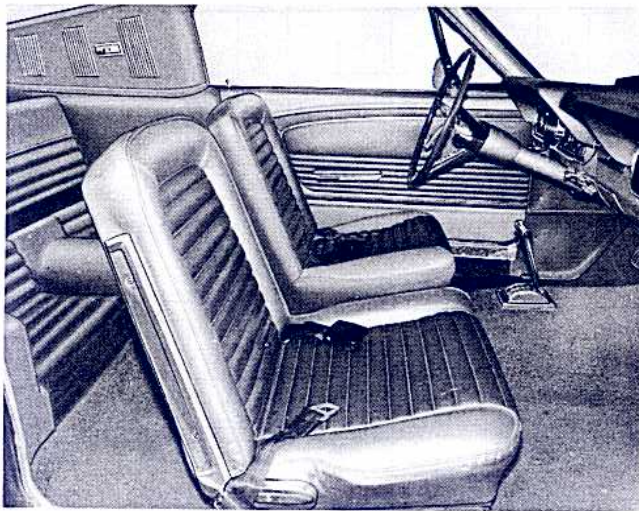
MUSTANG 2+2 FASTBACK



EXTERIOR STYLING AND FEATURES

- Unique roofline with swept-back appearance — functional air vents in roof rear quarters.
- Large rear window integrated into curvature of roof sheet metal — tinted glass in rear window is standard.
- Mustang emblem and MUSTANG 2+2 block letters on the front fenders.
- Shared in common with Hardtop and Convertible — new extruded aluminum grille with bright horizontal bars . . . "floating" Mustang grille emblem . . . bright-metal hood lip moulding . . . full-length bright-metal rocker panel molding . . . new simulated spoke wheel covers . . . FORD block letters on hood leading edge . . . three-sectional design taillights/turn signals . . . back-up lights . . . unique fuel filler cap . . . windshield, rear window and curved side glass trimmed in bright-metal . . . large, round design outside rear view mirror.

INTERIOR STYLING AND FEATURES

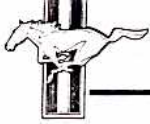


- Five dial instrument cluster with fuel, oil pressure, amps, and engine temperature gages.
- Fold-down rear seat that forms a flat load floor. Load floor panels are carpeted, and fiberglass panels along sides resist scuffing and wear.
- Choice of five all-vinyl trims — black, red, blue, aqua and parchment. All major interior items including the headlining, are color-keyed to the trim selection. With the parchment trim, the instrument panel safety-pad, radio-defroster grille, and carpets are color-coordinated to the exterior color.
- Door-operated courtesy lights — front and rear compartments.
- Additional standard features — large panel-mounted ash tray . . . front and rear seat belts . . . glove box light . . . cigarette lighter . . . all-vinyl door trim panels . . . suspended accelerator pedal . . . 16-inch, three-spoke, safety-type steering wheel . . . molded, nylon-rayon carpeting . . . front seat arm rests . . . safety-padded instrument panel and sun visors.

MAJOR SPECIFICATIONS

Wheelbase	108"
Tread — Front	6-Cyl.-55.4" — V-8-56.0"
— Rear	56.0"
Length — Overall	181.6"
Width — Overall	68.2"
Height — Overall	51.2"
Usable Luggage Capacity	Not Applicable

Front Compartment Dimensions —	
Effective Head Room	37.3"
Maximum Effective Leg Room	41.8"
Hip Room	54.7"
Shoulder Room	53.8"
Curb Weight (6-Cyl. — Std. Transmission)	2640 lbs



MUSTANG FEATURES

EXTERIOR COLOR AND INTERIOR TRIM AVAILABILITY

INTERIOR TRIM AND CODE ALL-VINYL		EXTERIOR COLORS AND CODE															
		A	F	H	K	M	P	R	T	U	V	X	Y	Z	4	5	8
		Raven Black	Arcadian Blue	Sahara Beige	Nightmist Blue	Wimbledon White	Antique Bronze	Ivy Green	Candyapple Red	Tahoe Turquoise	Emberglo	Vintage Burgundy	Silver Blue	Sauterne Gold	Silver Frost	Signalflare Red	Springtime Yellow
STANDARD BUCKET SEATS																	
Blue	22	O	X		X	X							X		O		
Red	25	X				X			X						X	X	
Black	26	X	O	X	O	X	X	X	X	X	O	X	O	X	X	X	X
Aqua	27	X				X				X							X
Parchment w/Blue Appointments	D2		X		X							X					
Parchment w/Burgundy Appointments	D3								X			X				O	
Parchment w/Emberglo Appointments	D4										X						
Parchment w/Black Appointments	D6	X															X
Parchment w/Aqua Appointments	D7									X							
Parchment w/Ivy Gold Appointments	D8							X						O			
Parchment w/Palomino Appointments	D9			X		X	X										
INTERIOR DECOR GROUP OPTION BUCKET SEATS																	
Blue and White	62	O	X		X	X						X		O			
Emberglo and Parchment	64	X		X		X					X						
Red	65	X				X			X						X	X	
Black	66	X	O	X	O	X	X	X	X	X	O	X	O	X	X	X	X
Aqua and White	67	X				X				X							
Ivy Gold and White	68	X				X		X						X			
Parchment w/Blue Appointments	F2		X		X							X					
Parchment w/Burgundy Appointments	F3								X			X				O	
Parchment w/Emberglo Appointments	F4										X						
Parchment w/Black Appointments	F6	X															X
Parchment w/Aqua Appointments	F7									X							
Parchment w/Ivy Gold Appointments	F8							X						O			
Parchment w/Palomino Appointments	F9			X		X	X										
*BENCH SEAT OPTION																	
Blue	32	O	X		X	X						X					
Red	35	X				X			X						X	X	
Black	36	X	O	X	O	X	X	X	X	X	O	X	O	X	X	X	X
Parchment w/Blue Appointments	C2		O		O							O					
Parchment w/Burgundy Appointments	C3								X							O	
Parchment w/Emberglo Appointments	C4										X						
Parchment w/Black Appointments	C6	X															X
Parchment w/Aqua Appointments	C7									X							
Parchment w/Ivy Gold Appointments	C8							X						O			
Parchment w/Palomino Appointments	C9			X		X	X										
§STRIPES W/ACCENT GROUP OPTION																	
Black	1		X	X		X	X		*X		*X			X	X		X
White	2	X			X		X	X	X	X	X	X				X	
Red	3	†X				†X									†X		
STRIPES W/GT OPTION																	
Black				X			X		*X			X		X	X		X
White		X			X	X	♦X	X	X	X	X	♦X	X			X	
Red		†X				#X											
Dark Blue			X			#X									†X		

NOTE: Convertible Tops and Vinyl Roof Option for Hardtop are available in Black or White with all Exterior Colors.

*Not available with 2+2 Fastback

‡Red Stripe only with Red Interior, Dark Blue Stripe only with Blue Interior.

§Not available in combination with GT option

♦White Stripe only with Parchment Interior

†Red Stripe only with Red Interior

‡Black Stripe only with Black Interior

X=Recommended

O=Also Available

MUSTANG FEATURES



STANDARD EQUIPMENT

	Hardtop	Convertible	2 + 2 Fastback		Hardtop	Convertible	2 + 2 Fastback
Air Cleaner Filter — 36,000 mile*	X	X	X	Heater and Defroster — Fresh Air	X	X	X
Accelerator Pedal — Suspended - Type	X	X	X	Hood Latch — Single - Action	X	X	X
Alternator — 38 - Amp	X	X	X	Horns — Dual	X	X	X
Ash Tray — Front	X	X	X	Instrument Panel — Padded	X	X	X
Arm Rests — Front	X	X	X	Insulated Body	X	X	X
Arm Rests — Ash Trays — Rear	X	X	X	Jack, Scissors - Type — Body Side	X	X	X
Back - Up Lights	X	X	X	Lamp Bulbs — Extended - Life	X	X	X
Battery — "Sta - Ful" Design	X	X	X	Lubrication, Chassis — 36,000 - Mile	X	X	X
Body — Rust - Resistant	X	X	X	Maintenance — Twice - A - Year	X	X	X
Brakes — Self - Adjusting	X	X	X	Mirror — Inside Rear View	X	X	X
Bucket Seats — Foam - Padded, Adjustable	X	X	X	Mirror — Outside Rear View	X	X	X
Carpets — Nylon - Rayon, Molded	X	X	X	Molding — Rocker Panel	X	X	X
Choke — Automatic	X	X	X	Muffler — Aluminized	X	X	X
Cigarette Lighter	X	X	X	Oil Filter — 6,000 - Mile	X	X	X
Coat Hooks	X	X	X	Scuff Plates — Aluminum	X	X	X
Coolant — 2 - Year or 36,000 - Mile	X	X	X	Seat Belts — Front and Rear	X	X	X
Courtesy Lights, Front — Door Switches	X	X	X	Seat — Rear — Folding			X
Courtesy Lights, Rear — Door Switches			X	Steering Wheel — Deep - Dish, Safety - Type	X	X	X
Curved Side Glass	X	X	X	Sun Visors — Padded, Color - Keyed	X	X	X
Door Checks — Two - Stage	X	X	X	Thermostat — 195 Degree	X	X	X
Door Hinges — Bronze - Bushed	X	X	X	Transmission Lever — Tunnel - Mounted	X	X	X
Door Latches — Safety - Type	X	X	X	Transmission — 3 - Speed Manual	X	X	X
Door Trim — All - Vinyl	X	X	X	Turn Signals	X	X	X
Emergency Flashers	X	X	X	Upholstery — All - Vinyl	X	X	X
Engine — "200" Six	X	X	X	Valve Lifters — Hydraulic	X	X	X
Finish — Super Diamond Lustre Enamel	X	X	X	Ventilation — Cowl - Aire Intakes	X	X	
Front Fenders — Bolt - On	X	X	X	Ventilation — Cowl - Aire plus Roof Vent Outlets			X
Fuel Tank — 16 - Gallon	X	X	X	Wheel Covers — Full	X	X	X
Glass — Safety	X	X	X	Windshield Washers	X	X	X
Glove Box Light	X	X	X	Windshield Wipers — 15" Electric	X	X	X
Headlining — Color - keyed Vinyl	X		X				

* 12,000 - Mile when equipped with closed crankcase emission system.

STANDARD LUXURY FEATURES

BUCKET SEATS — The front bucket seats are unique and distinctive with the Mustang — sculptured and foam-padded for maximum driving comfort. The seat is covered with heavy, cotton-backed vinyl upholstery material with pleated "Rosette" pattern inserts, and is trimmed with bright-metal shields on the outboard sides of the cushion and seat back. Both front seats are attached to smooth operating roller-bearing seat tracks that are adjustable through five inches of travel.

SUSPENDED ACCELERATOR PEDAL — Highly appreciated by all drivers, the suspended accelerator pedal has a dual-pivot action and pedal angle designed to keep the pedal flat against the foot. This provides a more natural leg position and easier, smoother operation, especially for women with high heels.

RIDING COMFORT — Since its introduction, the riding comfort of the Mustang has been one of its best selling features. The interior noise, vibration and ride harshness are amazingly low for a car of its weight and wheelbase. This has been achieved by the low-friction front and rear suspensions that are tuned for a balanced ride, the design of the platform chassis that resists twisting and shake, balancing of rotating parts, and large quantities and superior design of the body insulation and sound-proofing materials. For

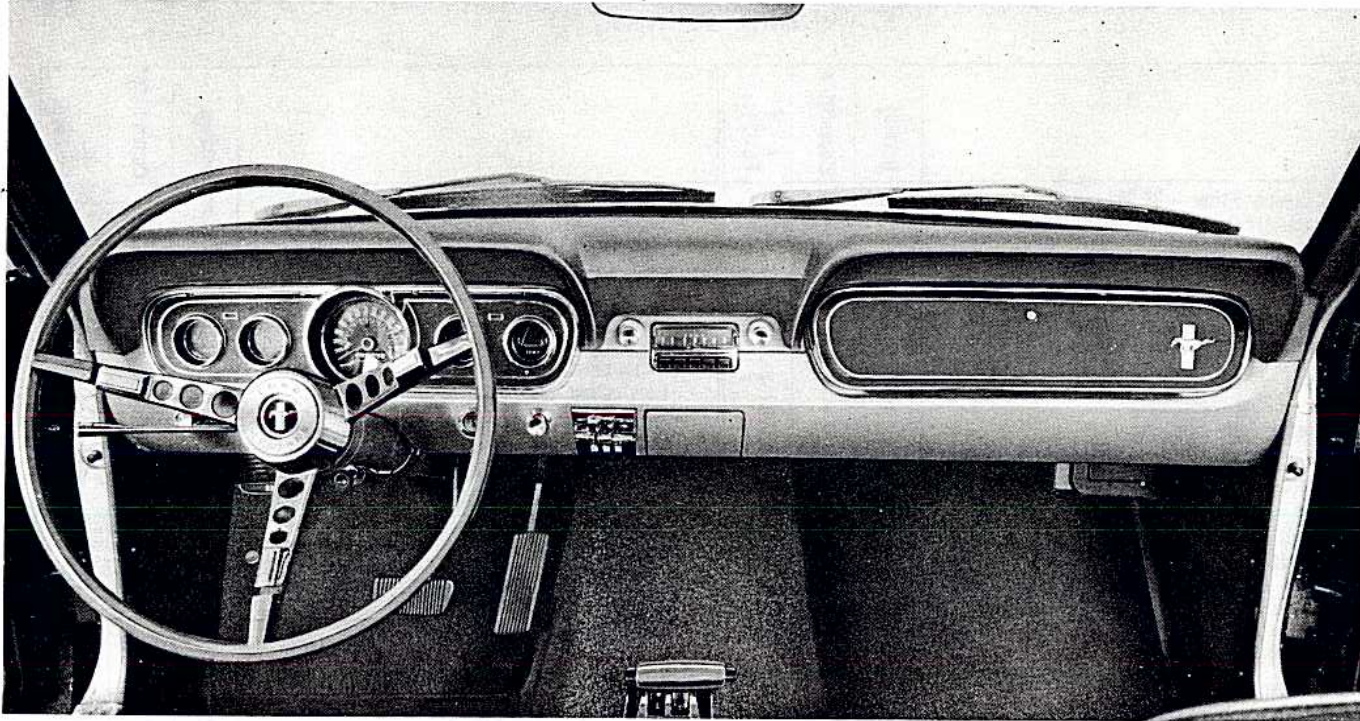
1966, refinements have been made in many areas, further improving the riding comfort to maintain Mustang's leadership in this important area.

WHEEL COVERS — The standard equipment wheel covers are freshly styled for 1966. They feature five argent-colored simulated spokes separated by charcoal-colored depressed areas with rectangular-shaped openings, suggesting a "sporty-competition" feeling. The simulated spokes, rectangular openings, and outer rim are bright-plated. The unique Mustang emblem is displayed in the center.

HEADLINING — The all-vinyl headlining in both the Hardtop and 2+2 Fastback models is color-keyed to the interior trim section — an extra luxury feature at no additional cost.

SAFETY/CONVENIENCE ITEMS — For extra safety and convenience, several items that were previously optional are now standard equipment.

- Padded sun visors.
- Emergency flashers that operate all four turn signals simultaneously.
- Windshield washers that feature a new high velocity pump and simultaneous operation with the wipers.
- A large, rectangular outside rear view mirror.
- Back-up lights that throw twin beams of light when moving in reverse.
- Front and rear seat belts.

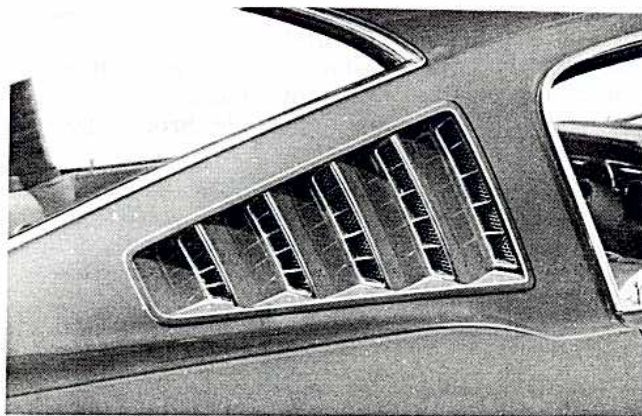


INSTRUMENT PANEL — The instrument panel features a five-dial instrument cluster directly in front of the driver, plus a full-width sculptured crash pad as standard equipment. A black "camera-case" finish accents the cluster area and glove box door, and both areas are surrounded by thin bright beads. The cluster is fully hooded to prevent windshield reflections during nighttime driving.

- The center dial in the new cluster contains the speedometer and odometer. The speedometer is graduated up to 140 mph in 5 mph increments. The high beam headlamp indicator light is near the top of the dial.
- The two gages on the left side of the cluster indicate fuel level and engine oil pressure. The left turn signal indicator light is centered above the two gages.
- The two gages on the right side of the cluster indicate electrical charging/discharging in amperes, and engine coolant temperature. The right turn signal indicator light is centered above the two gages.
- The windshield wiper switch is at the extreme left below the cluster. Pulling the switch operates the washers and simultaneously turns on the wipers. The wipers will continue to operate until the windshield is clean, then can be turned off manually.
- The light switch is located directly to the left of the steering column, and incorporates a rheostat to dim the instrument panel lights and a switch to operate the courtesy lights.
- The four-position ignition switch is conveniently located to the right of the steering column.
- The standard equipment "pop-out" cigarette lighter is located to the right of the ignition switch.
- The large pull-out ash tray is at the lower center of the instrument panel, within easy reach of both driver and passenger.
- The fresh air heater-defroster controls and blower switch are located to the left of the ash tray.

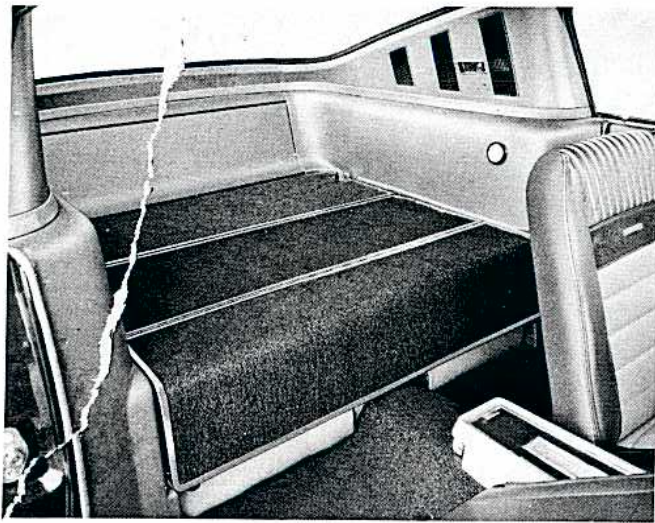
- An optional AM push-button radio, or optional AM Radio/Stereo Sonic Tape System may be installed at the center of the instrument panel. Refer to the opposite page for a complete description of this new stereo tape system.
- The large glove box has a swing-down door and ample room for most driving accessories. A glove box light is included as standard equipment.

14-INCH TIRES — For 1966, all Mustangs, including the six-cylinder models, will have 6.95 x 14 low-profile tires as standard equipment. These tires feature a wider cross-section and a reduced dimension between the road and rim. Advantages include greater stopping power, increased stability, a smoother ride, and less noise. Dual red band premium nylon 6.95 x 14 tires are standard with the high-performance V-8.



2+2 FASTBACK VENTILATION SYSTEM — A "Silent-Flo" ventilation system that incorporates vents in the roof rear quarter panels is standard equipment on the 2+2. These unique vents, when used with the front air inlets open and the windows closed, keep out noise and dust, reduce wind noise, and provide quiet air circulation throughout the passenger compartment.

MUSTANG FEATURES



2+2 FASTBACK FOLDING REAR SEAT — A standard feature of the 2+2 Fastback is the folding rear seat arrangement, which quickly converts the rear passenger compartment into a stowage area with a flat load floor.

In the up position the seat back is held with a latch and provides seating for two passengers. Releasing the latch permits folding the seat back and the panel behind it over the seat cushion, creating a flat stowage area that triples luggage capacity. The load floor panels are trimmed in bright-metal and covered with durable nylon-rayon carpeting, color-keyed to the interior trim selection. Color-keyed fiberglass panels extend along the sides and into the rear corners of the load area.

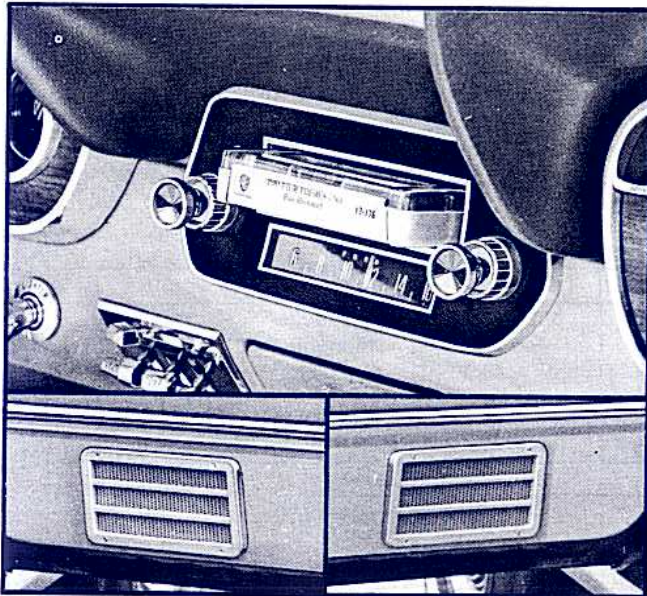
The panel at the rear of the load floor is of textured metal, and can be raised from inside the luggage compartment, extending the floor to the body rear panel.

OPTIONAL EQUIPMENT FEATURES

AM RADIO/STEREOSONIC TAPE SYSTEM — A new feature for 1966, this option combines a stereosonic tape system with a standard AM radio. When installed in Mustang, it will provide owners with the convenience of conventional AM radio or the superb listening pleasure of true hi-fidelity stereo tape.

Included with this option are two speakers, one in the front portion of each door lower trim panel. The normal speaker position in the top of the instrument panel is not used. The unit is operated as a radio in the normal manner, except there are no push buttons for station selection.

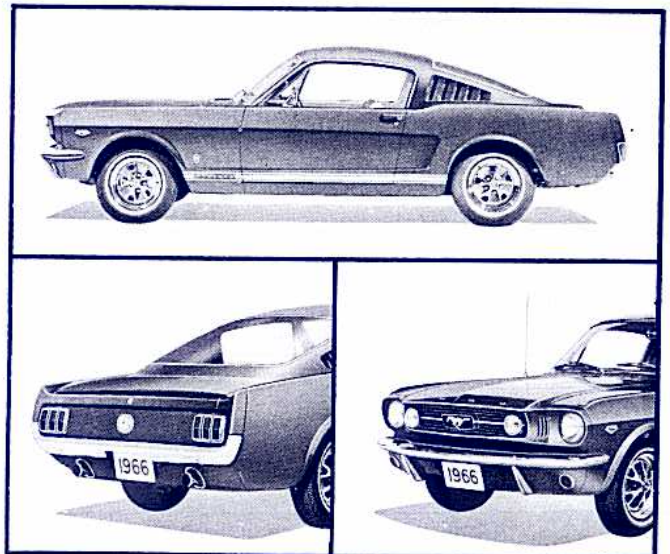
For stereo operation, a handy tape cartridge is inserted into the slot covered by a swing-in door just above the radio dial. The unit then automatically switches from radio to stereo operation. The stereo tape cartridge has four channels that play in rotation automatically. The operator can manually change to the following channel at any time by depressing and releasing the left-hand knob. Each cartridge will play continuously until removed, and stores up to one hour and 20 minutes of different selections. The normal on-off, volume, and tone controls are provided with the knob and ring on the left. A stereo balance control is provided by the ring behind the right-hand radio station selection knob.

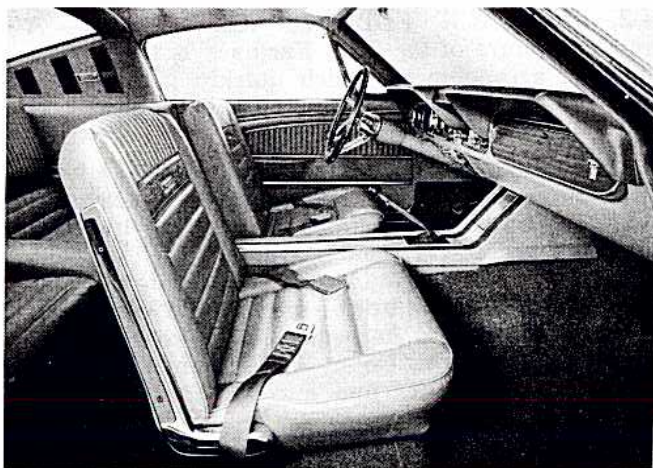


GT EQUIPMENT GROUP — Introduced in 1965-1/2, the GT Equipment Group is a hot seller on Mustangs purchased by driving enthusiasts. It provides all the components for outstanding performance — and the look to go with it.

The GT Equipment Group option is available only in combination with the optional 225 horsepower 4-v V-8, or optional 271 horsepower High-Performance V-8. Included with the GT option —

- Dual exhaust system with bright-plated exhaust trumpets that extend through the panel beneath the bumper.
- All the special handling package components — increased rate front and rear springs, larger shock absorbers, 21.7 to 1 steering ratio, and larger diameter front stabilizer bar.
- Front wheel disc brakes.
- Narrow/wide/narrow racing stripes, full-length and low along both sides. **MUSTANG** in bright block letters is inset in the stripes on the front fenders, plus a sporty GT plaque affixed above the stripes. The rocker panel molding is deleted with the option.
- A fuel filler cap with GT identification.
- Special fog lamps, grille bars and black painted grille.

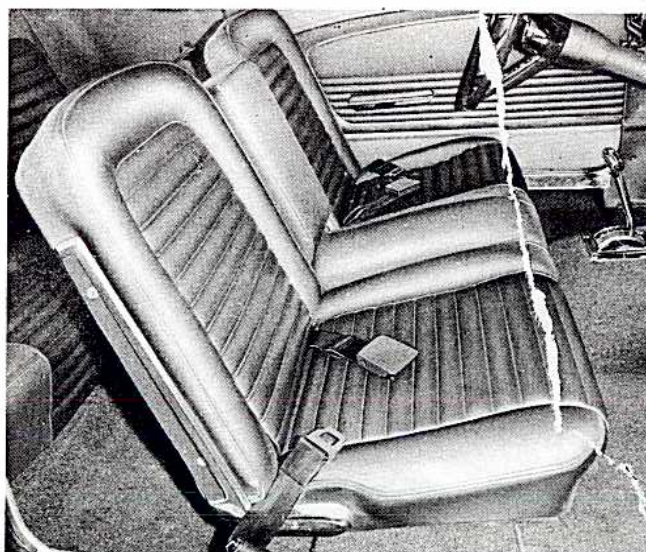




INTERIOR DECOR GROUP — This popular option adds a variety of elegant touches to provide the maximum in interior luxury, increased safety, and rich appearance. It is available with all three Mustang models.

The Interior Decor Group includes —

- Specially trimmed front and rear seats with wide-pleated inserts on the seat cushion and seat back, plus a unique embossed area on the seat back that features several "Mustangs" at full gallop.
- Molded door trim panels with integral arm rests. A dual courtesy-warning light is inset in the door lower panel.
- "Pistol-Grip" door handles accented with simulated wood grain appliques.
- Simulated wood-grain appliques on the instrument cluster and glove box door, plus matching appliques on the full-length console when it is ordered with this option.
- Deluxe steering wheel with the richness of a simulated wood rim, and three perforated bright-metal spokes incorporating short horn bars near the outer ends.
- Bright-metal trim on the accelerator, brake and clutch pedals.
- Availability of seven interior color trim schemes (See Page 4).



FULL-WIDTH FRONT SEAT — Available on Hardtops and Convertibles, this seat has individual seat backs with a full-width cushion. Between the seat backs is a wide arm rest that can be folded down for use by both driver and passenger. This option is available with four interior color trim schemes (See Page 4).

OTHER POPULAR OPTIONS FOR MUSTANG —

- A sporty console that includes a storage compartment at the front and courtesy lights and ash tray at the rear. With air-conditioning a unique console without a storage compartment is used.
- Visibility group that includes a remote controlled outside mirror, inside day/nite mirror, and two-speed windshield wipers.
- An accent paint stripe surrounding the body side sculptured area. When this option is installed, the simulated air scoop on the rear quarter is deleted.

A complete listing of all Options and Accessories is compiled at the end of this Section.

POWER TEAM SELECTION

There are eleven power team combinations available in the 1966 Mustang. Standard equipment on all models is the proven 200-cubic-inch 120 horsepower Six. For extra power, there are three versions of the popular 289 cubic-inch V-8 — the 289 2-v regular fuel at 200 horsepower . . . the 289 4-v premium fuel at 225 horsepower . . . and the 289 4-v High-Performance at 271 horsepower.

Included as standard equipment with the 120 horse-

power Six is a three-speed manual transmission, synchronized in second and third gears. Standard equipment with the 200 and 225 horsepower V-8 engines is Ford's three-speed manual transmission that is fully synchronized in all forward speeds. A four-speed manual transmission that is synchronized in all forward gears is optional with all engines. Ford's smooth shifting Cruise-O-Matic transmission is available with all engines including the 289 High-Performance V-8 for 1966.

POWER TEAM SELECTION CHART

ENGINES	TRANSMISSIONS			REAR AXLE RATIOS					
	3-Speed Manual	4-Speed Manual	Cruise-O-Matic	3-Speed Manual		4-Speed Manual		Cruise-O-Matic	
				Std.	Opt.	Std.	Opt.	Std.	Opt.
200 Six — Std.	Std.	Opt.	Opt.	3.20+	—	3.20+	—	2.83+	3.20
289 2v-V-8 — Opt.	Std.	Opt.	Opt.	2.80+	—	2.80+	—	2.80+	—
289 4v-V-8 — Opt.	Std.	Opt.	Opt.	3.00+	—	3.00+	—	3.00+	—
289 Hi-Perf. V-8 — Opt.	N.A.	Opt.	Opt.	—	—	3.50+	3.89	3.50+	3.89

+ Also available with optional limited-slip differential.